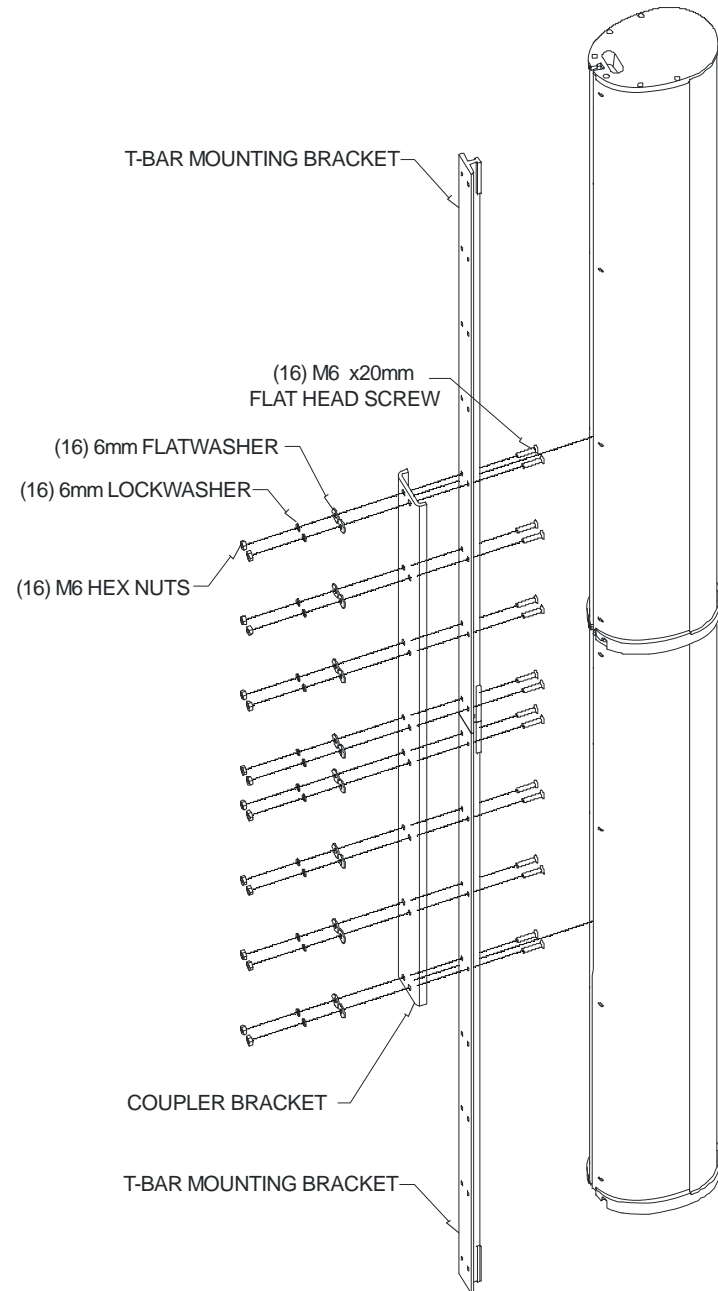


Figure 2: Coupler Bracket Assembly Diagram



ENT-CB

ENTASYS Coupler Bracket

Coupler Bracket for Community's ENTASYS Column Line Array System

The ENTASYS Coupler Bracket is used to attach two ENTASYS columns together into a tall assembly, before using the ENTASYS Pan Bracket, Combination Pan-Tilt Bracket or Fly Kit Bracket for permanent mounting or suspension. Multiple Coupler Brackets may be used to connect up to five columns together. Use two Coupler Brackets to join three ENTASYS columns together, use three Coupler Brackets to join four ENTASYS columns together, or use four Coupler Brackets to join five ENTASYS columns together.



WARNING: Up to four (4) ENTASYS Coupler Brackets may be used to connect up to five (5) ENTASYS loudspeakers together into a single array. Do not attempt to construct a single array or more than five (5) ENTASYS loudspeakers. Attempting to do so will exceed the Working Load Limit of the bracket and could result in the failure of the bracket and potentially result in severe injury and/or loss of life.

A single Coupler Bracket must be attached to the two T-Bar Mounting Brackets from the two ENTASYS columns that are to be connected together. Connecting the ENTASYS enclosures together is the first step required when constructing multiple column arrays, regardless of the other brackets that will be used to mount or suspend them.

All parts in the kit are engineered to provide a high margin of safety when used in accordance with these instructions. The brackets are manufactured of steel and are covered with a durable powder-coat finish. Kits are available in sets of one or two Coupler Brackets and in either black or white to match the color of the enclosures.

Table 1: Coupler Bracket Part Numbers

Part No.	Description
ENT-CB1	ENTASYS Coupler Bracket, Qty 1, Black
ENT-CB1W	ENTASYS Coupler Bracket, Qty 1, White
ENT-CB2	ENTASYS Coupler Bracket, Qty 2, Black
ENT-CB2W	ENTASYS Coupler Bracket, Qty 2, White

No hardware is provided to attach the tall ENTASYS column assembly connected by a Coupler Bracket(s) to the mounting surface. Such hardware must be supplied by the installer and should be sized and rated for the weight load of the enclosures. The installer is solely responsible for determining if all rigging components that are used to mount or suspend the enclosure(s) are adequately sized and rated, and if the structure they are mounted or suspended from is capable of safely supporting the aggregate weight load. If multiple enclosures are suspended one above the other, it is the installer's responsibility to insure that the combined weight load does not exceed the Working Load Limit of any one rigging fitting. This is particularly important if the enclosures are steeply angled upward or downward, as most or all of the weight may be supported by the front or rear points only.

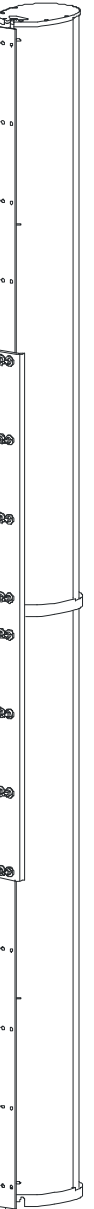


Table 2: ENTASYS Coupler Bracket Part List

Part	Qty
Coupler Bracket	1
M6 x 20mm Flat Head Screws	16
6mm Flat Washer	16
6mm Lock Washer	16
M6 Hex Nuts	16

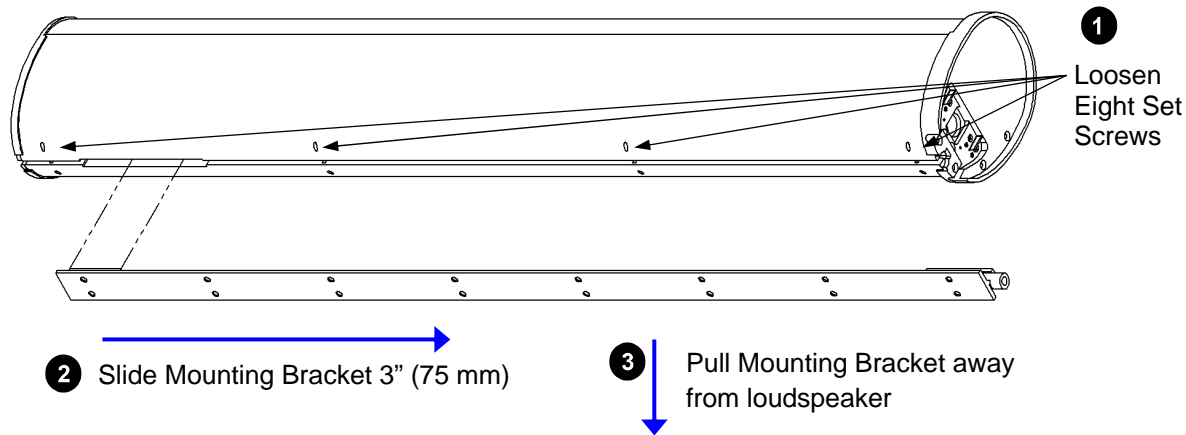
***The installer must supply all other hardware for the installation*

For more information on using the ENTASYS Coupler Bracket, please refer to the complete ENTASYS Installation/Operation Manual enclosed with each ENTASYS column.

ENTASYS Coupler Bracket Assembly Instructions

1. The ENTASYS T-Bar Mounting Bracket, sometimes referred to as the “T-bracket”, is included and shipped attached to each ENTASYS column loudspeaker. Remove the T-Bar Mounting Brackets from each ENTASYS column to be connected together. This is most easily accomplished by either laying the ENTASYS loudspeaker on its side or placing it upside down on a level surface. There are eight set screws, four on each side of the rear of the enclosure, that secure this bracket to the enclosure. Once these are sufficiently loosened, the Mounting Bracket may be slid down parallel to the enclosure, as if pulling it away from the bottom of the enclosure, approximately 3 inches (75 mm). It can then be pulled out of the slot and away from the enclosure.

Figure 1: T-Bar Mounting Bracket Removal



2. Bolt the Coupler Bracket to the two T-Bar Mounting Brackets using the M6 x 20mm bolts, flat washers, lock washers, and nuts included with the Coupler Bracket. Note that the T-Bar Mounting Brackets should lay inside the “U” shape profile of the Coupler Bracket. Verify that the nuts and bolts are securely tightened. Failure to do this may result in unsafe construction of the array.
3. If more than two ENTASYS columns are to be connected together, repeat Step 2 as necessary for connecting up to five T-Bar Mounting Brackets together.
4. Stack the ENTASYS columns together in the required order for the array to be constructed. This may be done vertically by stacking them on top of each other, or horizontally by laying them on the ground.
5. Align the tabs on the T-Bar Mounting Brackets with the larger opening in the slot on the back of each ENTASYS enclosure. Insert the T-Bar Mounting Bracket and Coupler Bracket assembly into the slot in the enclosure and slide the T-Bar Mounting Bracket and Coupler Bracket assembly up into position in the enclosure slot. This is done by simply reversing the order of the steps for removing the bracket as shown in Figure 1.
6. **Make sure the Bottom Fitting is securely fastened to the bottom of the T-Bar Mounting Bracket and Coupler Bracket assembly with its M6 Set Screw. This is critical as the entire weight of the array must be supported by this single Bottom Fitting.**
7. Tighten all eight of the M4 Set Screws in each ENTASYS enclosure to secure it to its T-Bar Mounting Bracket.



Assembly Tip: Use a C-clamp or locking pliers (vise-grips) to align the ends for the two T-Bar Mounting Brackets before bolting them to the Coupler Bracket. Leave the clamp in place until all of the screws have been tightened. This will assure proper alignment.



Outdoor Installation Tip: Whenever ENTASYS column loudspeakers are installed outdoors, or exposed to direct rain, water or precipitation, the loudspeaker enclosure must be angled downward at a minimum of two (2) degrees.



WARNING: The screws used and wall material onto which the tall ENTASYS array assembly is mounted or suspended must be capable of supporting the load of the ENTASYS assembly. It is the responsibility of the installer to verify these items.



CAUTION: Installation of loudspeakers should only be performed by trained and qualified personnel. It is strongly recommended that a licensed and certified professional structural engineer approve the mounting design.