



PROFESSIONAL LOUDSPEAKERS

CSV800 / CSV800T

TWO-WAY LOUDSPEAKER WITH 90° X 50° HF HORN

SPECIFICATIONS (See notes 1 and 2)

Loudspeaker Type: 2-Way, Full-Range
Operating Range: 60 Hz - 18 kHz
Max Input Ratings: 150W Continuous, 375W Program
 CSV800T@70V, 120W, 60W, 30W, 15W

Recommended Power Amplifier:

For maximum SPL: CSV800 - 300W to 450W @ 8 Ohms
 CSV800T - 240W

Sensitivity 1W/1m: CSV800 - 94 dB SPL
 CSV800T - 93 dB SPL

Nominal Impedance: CSV800 - 8 Ohms

Minimal Impedance: CSV800 -6.7 Ohms @ 350 Hz

Nominal Impedance: CSV800T - 70V
 120W: 41.6 Ohms, 60W: 83.3 Ohms
 30W: 166.7 Ohms, 15W: 333.2 Ohms

Nominal -6dB Beamwidth: 90° H (+27° / -34°, 2 kHz - 16 kHz)
 50° V (+70° / -26°, 2 kHz - 16 kHz)

Crossover Frequency: 2.5 kHz

Recommended Signal Processing: 60 Hz high pass filter

Drivers: LF (1) 8"
 HF (1) PZT on Pattern Control Horn

Driver Protection: PowerSense™ DDP

Input Connection: (1) Terminal barrier strip

Controls: None

Enclosure: Oak grain or black vinyl finish
 High density particle board

Mounting / Rigging Provisions: (4) 1/4-20 hanging point inserts

Grille: CSV800/CSV800T - Brown grille cloth

CSV800B/CSV800BT - Black grille cloth

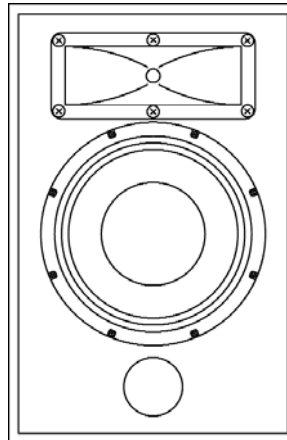
Required Accessories: None

Supplied Accessories: SPEEDMOUNT yoke assembly with drill template

Dimensions: Height: 16 in. / 406 mm
 Width: 10.5 in. / 267 mm
 Depth: 9.5 in. / 229 mm

Weight: CSV800 22lb. / 9.9 kg
 CSV800T 25lb. / 11.3 kg

1. Sensitivity: Free field pink noise measurement at 40 ft / 12.2 m at 25% power; extrapolated to 1 meter and an input of 2.83 volts RMS.
2. Watts: All wattage figures are calculated using the rated nominal impedance.



APPLICATIONS:

- Foreground / Background
- Restaurants
- Houses of Worship
- Sport Facilities & Health Clubs
- Theatre and Entertainment
- Rental Systems

FEATURES:

- High Sensitivity
- PowerSense™ Dynamic Driver Protection
- Optional High-Power, High Fidelity Transformer
- Oak Grain or Black Vinyl Exterior
- SPEEDMOUNT yoke assembly

DESCRIPTION

The CSV800 is a rugged, high-sensitivity, two-way, full-range loudspeaker system. The system utilizes one PZT high-frequency driver coupled to an exponential horn and one 8" woofer for high sensitivity and excellent power handling capability. These components are matched to an optimally tuned direct radiating bass reflex enclosure. The system's small size makes it perfect for unobtrusive permanent installation applications.

The CSV800 offers a robust internal PowerSense Dynamic Driver Protection crossover. The proprietary Power Sense DDP protection circuit provides both over current and thermal protection for added performance and reliability.

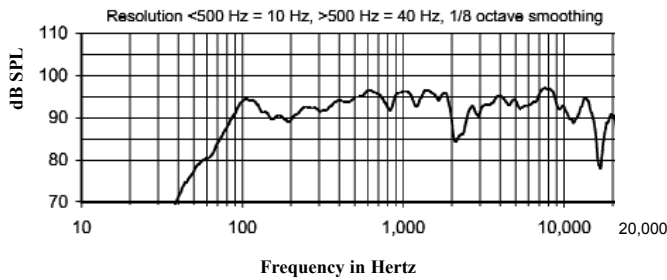
Designed as a stand-alone full-range loudspeaker system, the CSV800 offers enough bass for most foreground/background applications. The CSV800 has several model variations. The CSV800T is identical to the CSV800 except that it has a factory mounted TRC120, 120 Watt 70V/100V to 8 ohm transformer. The transformer has taps of 120W, 60W, 30W, and 15W that can be selected on the input barrier strip. The CSV800B and CSV800BT are the CSV800 and CSV800T loudspeakers with a black finish. Mounting is easily accomplished with the provided SPEEDMOUNT yoke assembly with drill template.

COMMUNITY PROFESSIONAL LOUDSPEAKERS

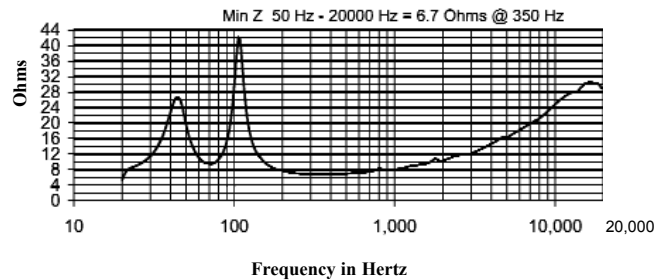
333 East 5th Street, Chester, PA USA 19013-4511 TEL (610) 876-3400 FAX (610) 874-0190

www.loudspeakers.net

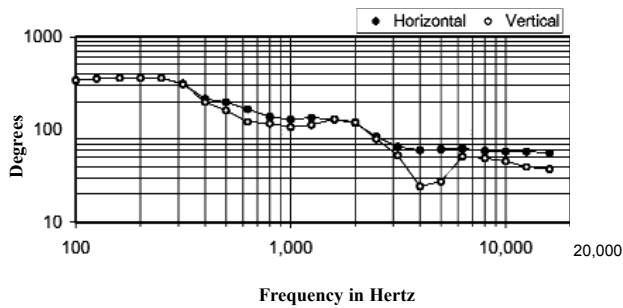
Frequency Response



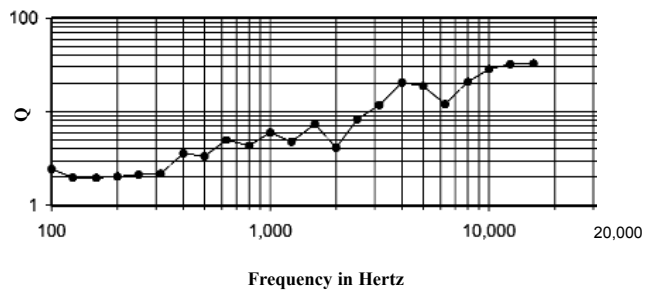
Impedance



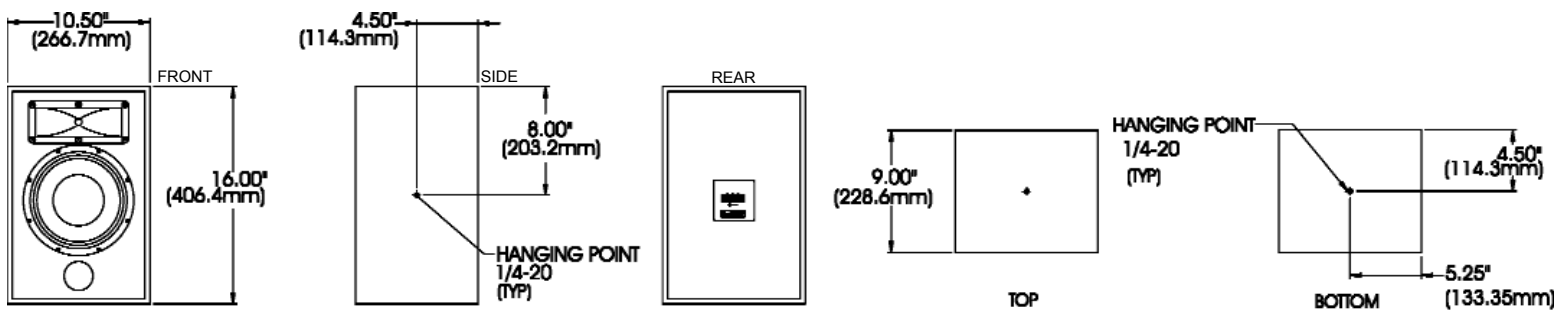
Beamwidth



Axial Q



DIMENSIONS



ARCHITECTS AND ENGINEERS SPECIFICATIONS - CSV800

The loudspeaker system shall be a direct radiating, bass-reflex design with one 8" woofer and one PZT driver coupled to an exponential horn. All components shall be connected to an integral crossover/protector. The crossover/protector shall be a two-way design at 2,500Hz. The crossover shall utilize high quality, high positive current coefficient resistors (HPCCR's) for component protection. The loudspeaker enclosure shall have an internal volume of .5 cu ft. (13.01) and be constructed of dense, well-braced stock covered in (choose color: Oak grain or black vinyl) finish. The system shall meet the following performance criteria: Amplitude response of 60Hz to 18,000Hz +/-5dB, 150W RMS power handling, 94 dB sensitivity at 1 meter with one watt applied. Coverage pattern shall be nominally 90x50 (H x V). Dimensions shall be 16 in. (406mm) high, 10.5 in. (267mm) wide and 9.5 in. (229mm) deep, and weight 25 lbs. (11.3 kg.). The system impedance shall be 8 ohms nominal.

LIMITED WARRANTY

Community CSV800 loudspeaker systems are guaranteed to be free from defects in materials and workmanship for a period of five years from the date of sale to the original purchaser. This warranty applies to the product; therefore, the remainder of the warranty period will be automatically transferred to any subsequent owner. This warranty does not apply to products which have been subjected to abuse, accident, modification, improper handling/installation, or repairs made without factory authorization or by other than an authorized Community Field Service Station. Items or products covered by this warranty will be repaired or replaced, at the option of Community, without charge for materials or labor, provided products are returned prepaid for inspection to the Community factory in Chester, PA or to a Community authorized Field Service Station.