



PROFESSIONAL LOUDSPEAKERS

T-CLASS / TFR64S

THREE-WAY TRIAMPLIFIED 60° X 40° HIGH OUTPUT HORN SYSTEM

SPECIFICATIONS (See notes 1 and 2)

Loudspeaker Type: 3-way, horn loaded
Operating Range: 60 Hz - 18 kHz
 70 Hz - 17 kHz (+/-3dB)
Max Input (Passive): 600W continuous, 1500W program
 49 volts RMS, 110 volts momentary peak
Recommended Power Amp: 1250W to 1800W @ 4 Ohms
Maximum Inputs (Triamp):
 LF:(Same as for Passive mode)
Recommended LF Power Amp:
 (Same as for Passive mode)
 MF:75W continuous, 200W program
 24 volts RMS, 57 volts momentary peak
Recommended MF Power Amp: 170W to 240W @ 8 Ohms
 HF:100W continuous, 400W program
 28 volts RMS, 80 volts momentary peak
Recommended HF Power Amp: 330W to 480W @ 8 Ohms
Sensitivities 1W/1m:
 LF: 108 dB SPL (80 Hz - 630 Hz 1/3 octave bands)
 MF: 114 dB SPL (630 Hz - 4000 Hz 1/3 octave bands)
 HF: 116 dB SPL (4000 Hz - 12500 Hz 1/3 octave bands)
Maximum Output: 136 dB SPL / 143 dB SPL (peak)
Nominal Impedance (passive): 4 Ohms
Min Impedance: 3.7 Ohms @ 110 Hz
Nominal Impedances (Triamp): LF: 4 Ohms
 MF: 8 Ohms
 HF: 8 Ohms
Nominal -6dB Beamwidth:
 60° H (+18° / -15°, 1600 Hz - 16000 Hz)
 40° V (+4° / -17°, 1600 Hz - 16000 Hz)
Axial Q / DI: 28.3 / 14.5, 1.6 kHz - 16 kHz
Crossover Frequencies: 630 Hz / 4 kHz
Recommended Signal Processing:
 70 Hz - 700 Hz crossover (for biamp)
 700 Hz - 4 kHz crossover (for triamp)
 70 Hz high pass filter
Drivers: LF (2) 12"
 MF (1) M200
 HF (1) UC2
Input Connection: (2) Neutrik NL8MP, (tri-amp)
 (2) Neutrik NL4MP, (passive/bi-amp)
 (3) dual banana jacks
Controls: Passive / Bi-amp switch
Enclosure: 13-ply 18 mm Baltic Birch
Enclosure Hardware: (10) Ergo-Grip handles
Mounting / Rigging Provisions:
 (8) 3/8-16 rigging points, W.L.L. 300 lb. vertical pull each
 (3) seat track
Grille: 16 gauge perforated steel (see options)
Required Accessories: (DSP) DXP4800 Contoller
Supplied Accessories: None
Optional Accessories: 3/8-EYBLTKIT: (4) forged 3/8-16 eyebolts,
 DXP4800, TFRJP: Joiner Plate connects adjacent TFR FLYBAR, TFR-FB:
 Single flybar, TFR-RAFRAC: Rear seat track mount, TFR-COVER, TFR-
 DOLLY, TFR-RIGCABLE,SKIPI,SKIP5

Dimensions:
Height: 25.1 in. / 637.5 mm
Width Front: 25.45 in. / 646.4 mm
Width Rear: 12.1 in. / 307.3 mm
Depth: 33.5 in. / 852.2 mm
Weight: 155 lb. / 70.3 kg
Shipping Weight: 161 lb. / 73 kg

1. Sensitivity: Free field pink noise measurement at 40 ft / 12.2 m at 50% power; extrapolated to 1 meter and an input of 2 volts RMS.
 2. Watts: All wattage figures are calculated using the rated nominal impedance.



APPLICATIONS:

The TFR64S is well suited for use as an array element, or as a distributed system loudspeaker in properly configured indoor applications including:

- Full-spectrum, Center Cluster Reinforcement for Churches, Auditoriums, etc.
- Dance/Nightclubs
- Athletic Field Houses (basketball, skating/ice hockey rinks, etc.)
- Convention Centers, Stadia

DESIGN BENEFITS:

- High Efficiency Horn Loading
- Symmetrical Coverage Pattern
- High-Fidelity, Full-Range Reproduction of Music And Speech

FEATURES:

- Drivers: LF (2) 12" cast frame
- MF (1) M200, 2" (51mm) exit, low compression driver with non-metallic diaphragm
- HF (1) UC2, 2" (51mm) exit, low compression driver with non-metallic diaphragm
- Trapezoidal Baltic Birch enclosure ships with a Tri-amp input panel
- Passive/Biamp crossover available
- Input Connections: Neutrik NL4 (passive/bi-amp), NL8 (tri-amp)
- Four top/bottom eye-bolt rigging points.

DESCRIPTION

The TFR64S is an all horn-loaded tri-axial design using precision, hand-laminated fiberglass, proprietary waveguides to deliver quality, full-range sound projection in short throw downfill applications. Its wide, smooth frequency response and high efficiency provide superb projection of clear, intelligible speech and ensure high-fidelity music reproduction at very low distortion.

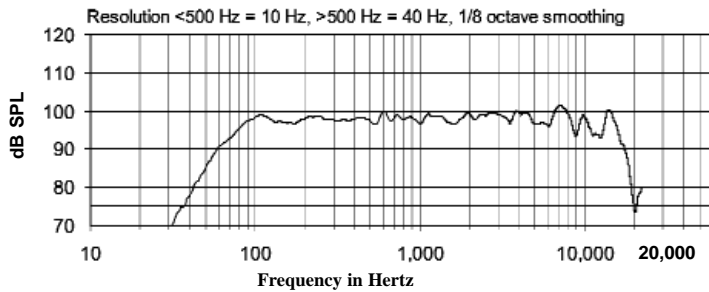
The outer TFR64S enclosure forms a double wall construction, while the mid/high frequency horn assembly is mounted in the mouth of the bass horn. The unique TFR64S mid/HF horn uses a single M200 mid-range and a UC2 HF driver for 60°H x 40°V coverage. For flexibility, a switchable, high quality passive crossover/bi-amp input panel is available.

The TFR64S permits good horizontal arrayability when interspersed with TSS subwoofers.

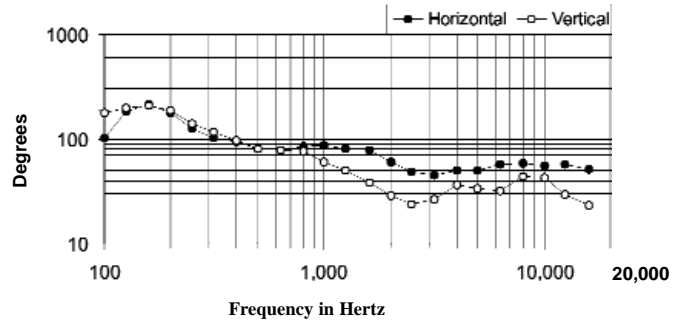
Five-year limited non-component warranty.

Two-year limited component warranty.

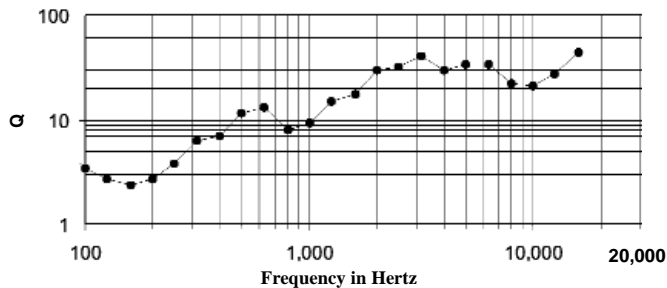
FULL-RANGE FREQUENCY RESPONSE (PROCESSED)



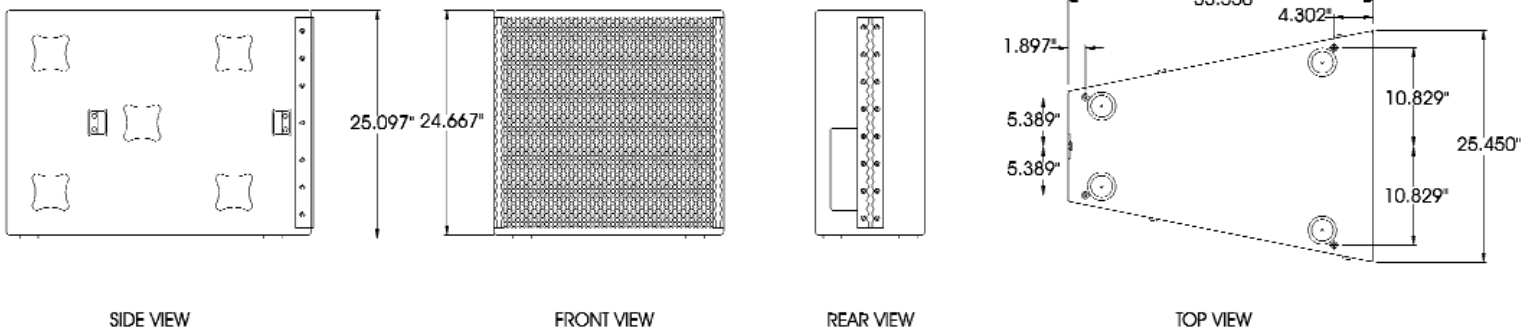
BEAM WIDTH



AXIAL Q



DIMENSIONS



ARCHITECTS AND ENGINEERS SPECIFICATIONS

The TFR64S loudspeaker system shall be a horn-loaded, three-way, full-range bass reflex trapezoidal design with two 12" woofers, plus one 2" exit mid-range driver with a non-metallic diaphragm, and one 2" exit HF driver with a non-metallic diaphragm mounted to an integrated, interchangeable MF/HF fiberglass waveguide module. Crossover frequencies shall be of 630 Hz and 4 kHz. There shall be two NL8MP (tri-amp) connectors. The system shall meet the following performance criteria: Overall amplitude response of 70Hz to 17 kHz (+/-3dB) with LF section amplitude response 80-630Hz, mid-range section amplitude response 630 Hz-4000 Hz, and HF section amplitude response 4000 Hz-12.5 kHz. (+/-2dB) Tri-amp mode power handling shall achieve, 600W RMS and 1500W PGM for LF, 75W RMS and 200W PGM for mid-range and 100W RMS and 400W PGM for HF (@4kHz/24dB HPF). NOTE: HF bandpass NOT accessible in passive mode. The loudspeaker enclosure shall be well-braced 18mm 13-ply Baltic birch with a black powder-coated 16 gauge perforated steel grille. The enclosure is finished with black TufCoat™. There shall be eight 3/8in-16(threads per inch) integral threaded insert mounting points connected to top and bottom internal steel bracing. The LF sensitivity is 108 dB SPL/1W @ 4 ohms. The MF sensitivity is 114 dB SPL/1W @ 8 ohms. The HF sensitivity is 116 dB/1W @ 8 ohms. Nominal dispersion shall be 60°H x 40°V from 1.6 kHz to 16 kHz The loudspeaker shall be 25.1"(637.5mm) H, 25.45"(646.4mm) W(front), 12.1"(307.3mm) W(rear) x 33.5"(852.2mm) D and weigh 155lbs (70.3kg). The three-way, full-range loudspeaker system shall be the Community Model TFR64S.