

SPECIFICATIONS (See notes 1 and 2)

Loudspeaker Type: 2-way, multi-angle / PA, bass ported
Operating Range: 70 Hz - 18 kHz, 70 Hz - 18 kHz (+/-5dB)

Max Input (Passive):
200W continuous, 500W program
40 volts RMS, 89 volts momentary peak

Recommended Power Amp: 420W to 600W @ 8 Ohms

Max Inputs (Biamp):
LF: (Same as for Passive mode)
Recommended LF Power Amp: (Same as for Passive mode)
HF: 50W continuous, 125W program
20 volts RMS, 45 volts momentary peak
Recommended HF Power Amp: 100W to 150W @ 8 Ohms

Sensitivity 1W/1m:
97 dB SPL (70 Hz - 18 kHz 1/3 octave bands)
96 dB SPL (250 Hz - 4 kHz speech range)

Maximum Output: 120 dB SPL / 127 dB SPL (peak)

Nominal Impedance (passive): 8 Ohms

Min Impedance: 5.2 Ohms @ 210 Hz

Nominal Impedances (Biamp): LF: 8 Ohms, HF: 8 Ohms

Nominal -6 dB Beamwidth:
80° H (+6° / -18°, 2 kHz - 10 kHz)
35° V (+8° / -3°, 2 kHz - 10 kHz)

Axial Q / DI:
24.4 / 13.9, 2 kHz - 10 kHz

Crossover Frequency: 2 kHz
Recommended Signal Processing: 60 Hz high pass filter

Drivers:
LF (1) 12", Ferrofluid-cooled
HF (1) 1" exit, titanium diaphragm

Driver Protection: PowerSense™ DDP

Input Connection: (2) Neutrik NL4MP, (2) 1/4 in. jack

Controls: Passive / Biamp switch, 2 position HF level switch

Enclosure: Black carpet covered particle board

Enclosure Hardware:
(1) Steel recessed spring handle
(4) Corner Protectors

Mounting / Rigging Provisions:
(1) 1-3/8" stand socket

Grille: 16 gauge perforated steel, black powder coated

Required Accessories: None

Supplied Accessories: None

Optional Accessories:
SB5: black 5 ft x 1-3/8" steel pole for mounting to a subwoofer

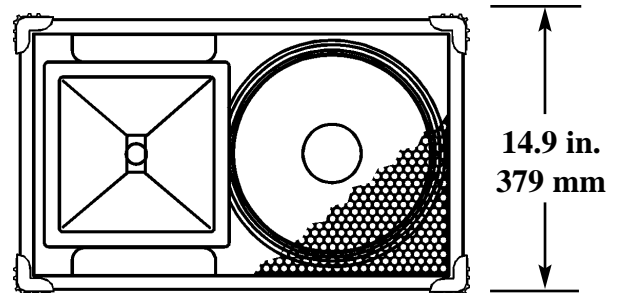
Dimensions (including corner protectors):
Height: 14.9 in. / 379 mm
Width: 24.4 in. / 620 mm
Depth: 15.6 in. / 395 mm

Weight: 52 lb. / 23.6 kg

Shipping Weight: 58 lb. / 26.3 kg

1. Sensitivity: Free field pink noise measurement at 20 ft / 6.1 m at 25% power; extrapolated to 1 meter and an input of 2.83 volts RMS.

2. Watts: All wattage figures are calculated using the rated nominal impedance.



APPLICATIONS:

- Theatres / Auditoria
- Portable PA
- Houses of Worship
- Clubs
- Bands

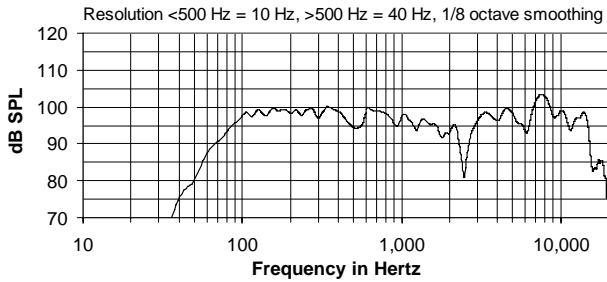
FEATURES:

- Dual-position Floor Monitor or Upright PA Use
- 1" Titanium HF Driver
- Switchable Passive / Biamp Modes
- 2 Position HF Level Switch
- PowerSense™ DDP Circuit with Front Indication
- Steel Handle and Steel Input Panel

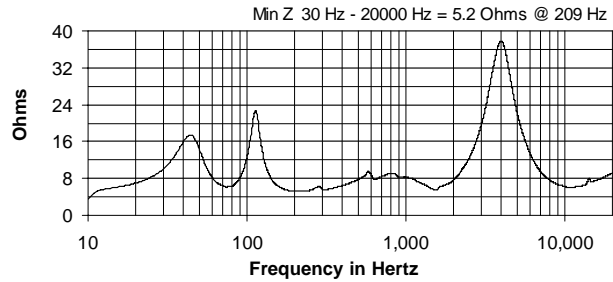
DESCRIPTION

The XLT41 is a small and versatile two-way full-range bass reflex loudspeaker system engineered for multiple uses in club and performance public address. The HF horn is rotatable for narrower horizontal coverage or for vertical mounting. The black-painted particle board enclosure and black perforated steel grille present an attractive package. Features an over-drive indicator light and a passive / biamp switch on the input panel, PowerSense™ protection circuitry and a Ferrofluid cooled woofer. Five year warranty.

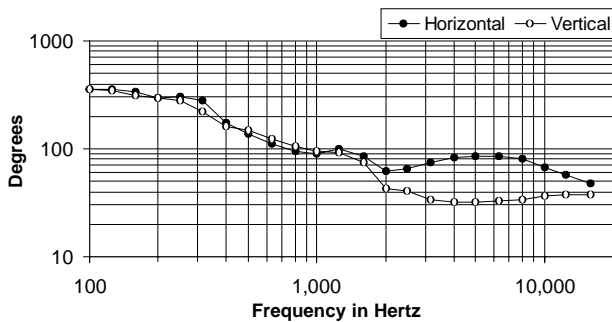
FREQUENCY RESPONSE



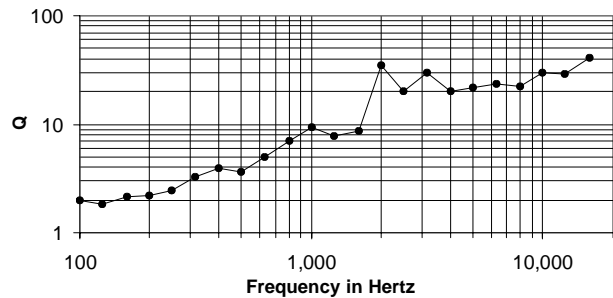
IMPEDANCE



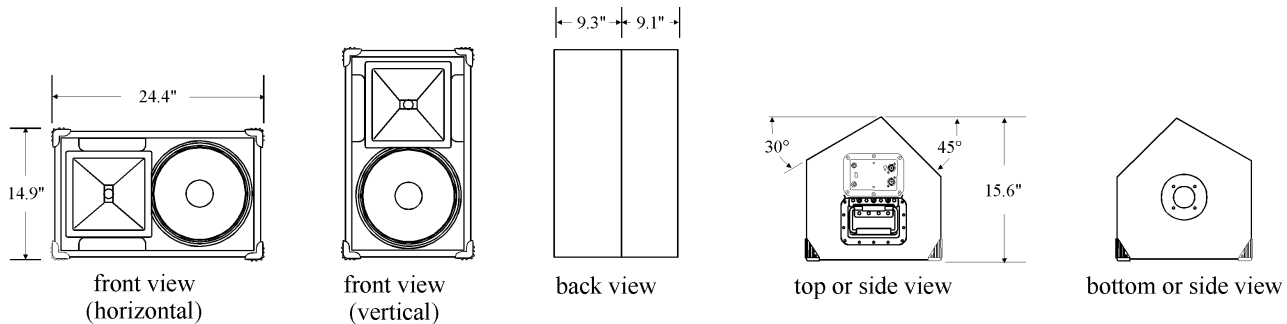
BEAMWIDTH



AXIAL Q



DIMENSIONS



ARCHITECTS' AND ENGINEERS' SPECIFICATIONS

The loudspeaker system shall be a two-way, full-range bass reflex design with angled back panels allowing 30 degree and 45 degree front slant when used as a PA monitor. The loudspeaker system shall have one 12 in. Ferrofluid-cooled woofer and one 1 in. exit HF driver with a titanium diaphragm mounted to a 90° rotatable HF fiberglass horn. Drivers shall be connected to an integral crossover with a crossover frequency of 2 kHz and integral over-current protection circuitry using high positive current coefficient resistors. There shall be two NL4MP connectors and two 1/4" phone jack connectors with a switch for passive or biamplified connection and side-facing LED over-power indicator light. The loudspeaker enclosure shall be black carpeted particle board with a 16 gauge perforated steel grille. The system shall have an amplitude response of 70 Hz to 18 kHz (+/- 5 dB), input capability of 40V RMS, 97 dB sensitivity at one meter and 2.83V / 8 ohms nominal impedance. The nominal dispersion shall be 80°H x 35°V from 2 kHz to 10 kHz. The loudspeaker shall be 24.4 in. (620 mm) W x 14.9 in. (379 mm) H x 15.6 in. (395 mm)D and weigh 52 lbs (23.6 kg).