

SPECIFICATIONS (See notes 1 and 2)

Loudspeaker Type: 3-way, Full-range, bass ported
Operating Range: 50 Hz - 18 kHz
 50 Hz - 18 kHz (+/-5dB)

Max Input (Passive):
 200W continuous, 500W Program
 28 volts RMS, 63 volts momentary peak

Recommended Power Amplifier:
 420W to 600W @ 4 Ohms

Max Inputs (Biamp):
 LF: (Same as for Passive mode)
 Recommended LF Power Amp: (Same as for Passive mode)
 MF/HF: 80W continuous, 200W program
 25 volts RMS, 57 volts momentary peak
 Recommended MF/HF Power Amp: 170W to 240W @ 8 Ohms

Sensitivity 1W/1m:
 97dB SPL (50 Hz - 18 kHz 1/3 octave bands)
 97dB SPL (250 Hz - 4 kHz speech range)

Maximum Output: 120 dB SPL / 127 dB SPL (peak)

Nominal Impedance (Passive): 4 Ohms

Min Impedance: 5.1 Ohms @ 120 Hz

Nominal Impedance (Biamp): LF: 4 Ohms, HF: 8 Ohms

Nominal -6dB Beamwidth:
 65° H (+5° / -5°, 2 kHz - 10 kHz)
 30° V (+7° / -7°, 2 kHz - 10 kHz)

Axial Q / DI:
 25.1 / 14, 2 kHz - 10 kHz

Crossover Frequency: 500 Hz / 2.5 kHz

Recommended Signal Processing: 40 Hz high pass filter

Drivers:
 LF (1) 15" cone, Ferrofluid-cooled
 MF (1) 6.5" cone, Ferrofluid-cooled
 HF (1) 1" exit, titanium diaphragm

Driver Protection: PowerSense™ DDP

Input Connection: (2) Neutrik NL4MP
 (2) 1/4 inch jack

Controls: Passive / Biamp switch
 2 position HF level switch

Enclosure: 13-ply 18 mm Baltic birch, Polane painted

Enclosure Hardware:
 (2) Steel recessed bar-handles
 (4) Heavy-duty rubber feet

Mounting / Rigging Provisions:
 (6) 3/8-16 rigging points, W.L.L. 150 lb. vertical pull each
 (2) 5/16-18 stand adapter attachment points

Grille: 16 gauge perforated steel, black powder coated

Required Accessories: None

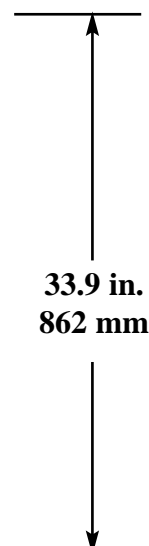
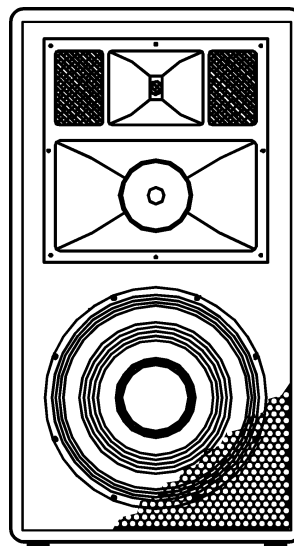
Supplied Accessories: None

Optional Accessories: EYBLTKIT: (4) 3/8-16 forged eyebolts

Dimensions (including feet):
 Height: 33.9 in. / 862 mm (33.5 in. / 851 mm w/o feet)
 Width (front): 19.75 in. / 502 mm
 Width (rear): 13 in. / 331 mm
 Depth: 17.9 in. / 455 mm

Weight: 85 lb. / 38.6 kg

Shipping Weight: 95 lb. / 43.1 kg



APPLICATIONS:

- Sound Reinforcement
- Houses of Worship
- Sport Facilities & Health Clubs
- Performance Venues
- A/V Systems

FEATURES:

- 1" Titanium HF Driver and 6-1/2" Cone Midrange
- Ferrofluid-cooled 15" LF
- Switchable Passive / Biamp Modes
- PowerSense™ DDP Circuit with Front/Rear Indicators
- Trapezoidal Enclosure for Arraying
- Steel Bar-Handles and Input Panel
- Black Paint Exterior

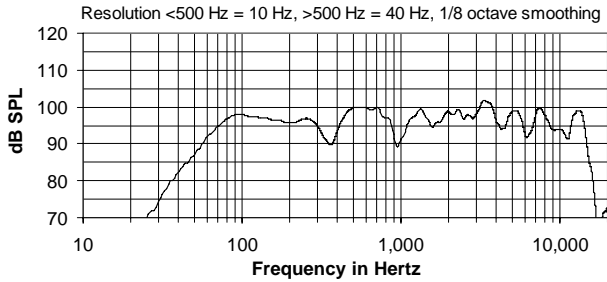
DESCRIPTION

The XLT46E is a versatile, three-way full-range bass reflex loudspeaker system engineered for use in small to medium PA systems in clubs or performance applications. The 60 x 40 HF horn is rotatable for narrower horizontal coverage or for vertical mounting. The black-painted 13-ply Baltic birch enclosure and black perforated steel grille present an attractive package. Features an over-drive indicator light and a passive / biamp switch on the input panel, PowerSense protection circuitry and a Ferrofluid cooled woofer. Five year warranty.

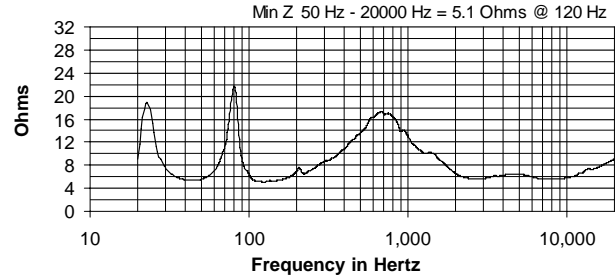
1. Sensitivity: Free field pink noise measurement at 20 ft / 6.1 m at 25% power; extrapolated to 1 meter and an input of 2 volts RMS.

2. Watts: All wattage figures are calculated using the rated nominal impedance.

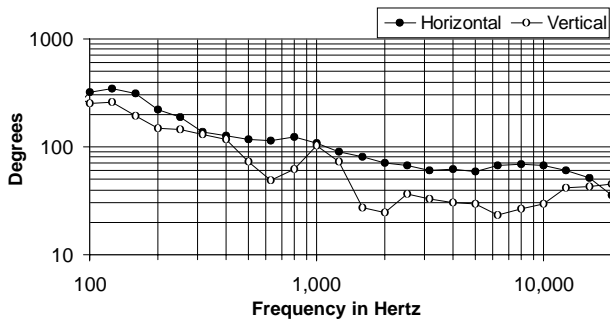
FREQUENCY RESPONSE



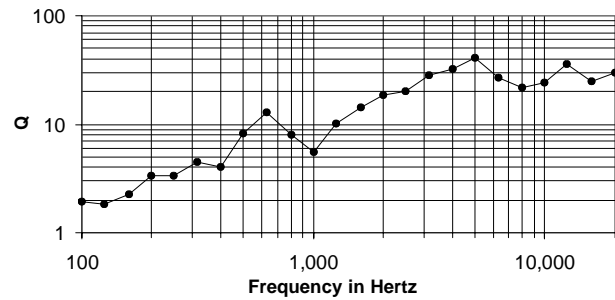
IMPEDANCE



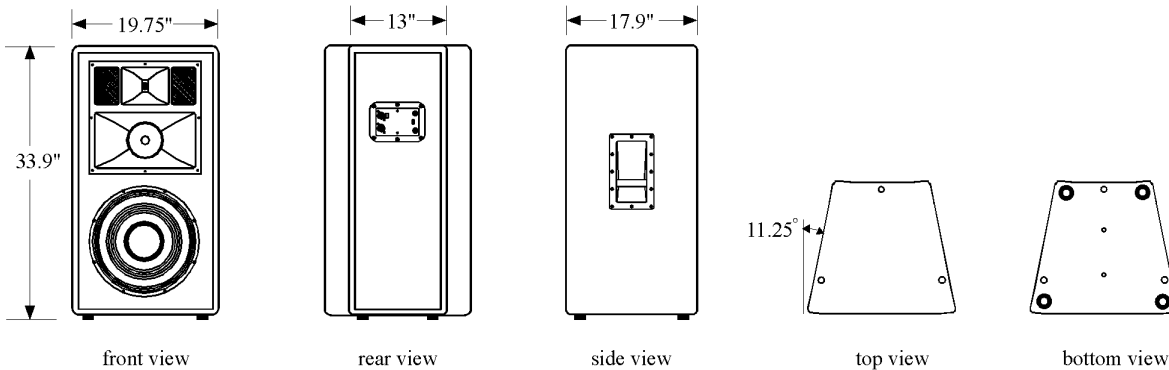
BEAMWIDTH



AXIAL Q



DIMENSIONS



ARCHITECTS' AND ENGINEERS' SPECIFICATIONS

The loudspeaker system shall be a three-way, full-range bass reflex trapezoidal design with one 15 in. Ferrofluid-cooled woofer, one 6.5 in. Ferrofluid-cooled midrange driver and one 1 in. exit HF driver with a titanium diaphragm mounted to a 60° HF fiberglass horn. Drivers shall be connected to an integral crossover with crossover frequencies of 500 Hz and 2 kHz and integral over-current protection circuitry using high positive current coefficient resistors. There shall be two NL4MP connectors and two 1/4" phone jack connectors with a switch for passive or bi-amplified connection and rear-facing LED over-power indicator light. The loudspeaker enclosure shall be 13-ply Baltic birch plywood with a 16 gauge perforated steel grille and finished with black paint. The system shall have an amplitude response of 50 Hz to 18 kHz (+/- 5 dB), input capability of 28V RMS, 97 dB sensitivity at one meter and 2V / 4 ohms nominal impedance. The nominal dispersion shall be 65°H x 30° V from 2 kHz to 10 kHz. The loudspeaker shall be 33.9 in. (862 mm) H x 19.75 in. (502 mm) W (front) x 13 in. (331 mm) W (rear) x 17.9 in. (455 mm) D and weigh 85 lbs (38.6 kg).